

***LENNOX*** <sup>®</sup>

**You always expect  
your refrigerator to work.**





**You expect  
to have lights....**





**....and television....**





**WARNING**  
UNREINFORCED  
CABLE

**...and a  
comfortable home.**



**It's easy to take power  
for granted...**



**...until it goes out and  
everything quits.**



# 3.5 million

U.S. residents experience a power outage each week.

Source: Electric Power Research Institute

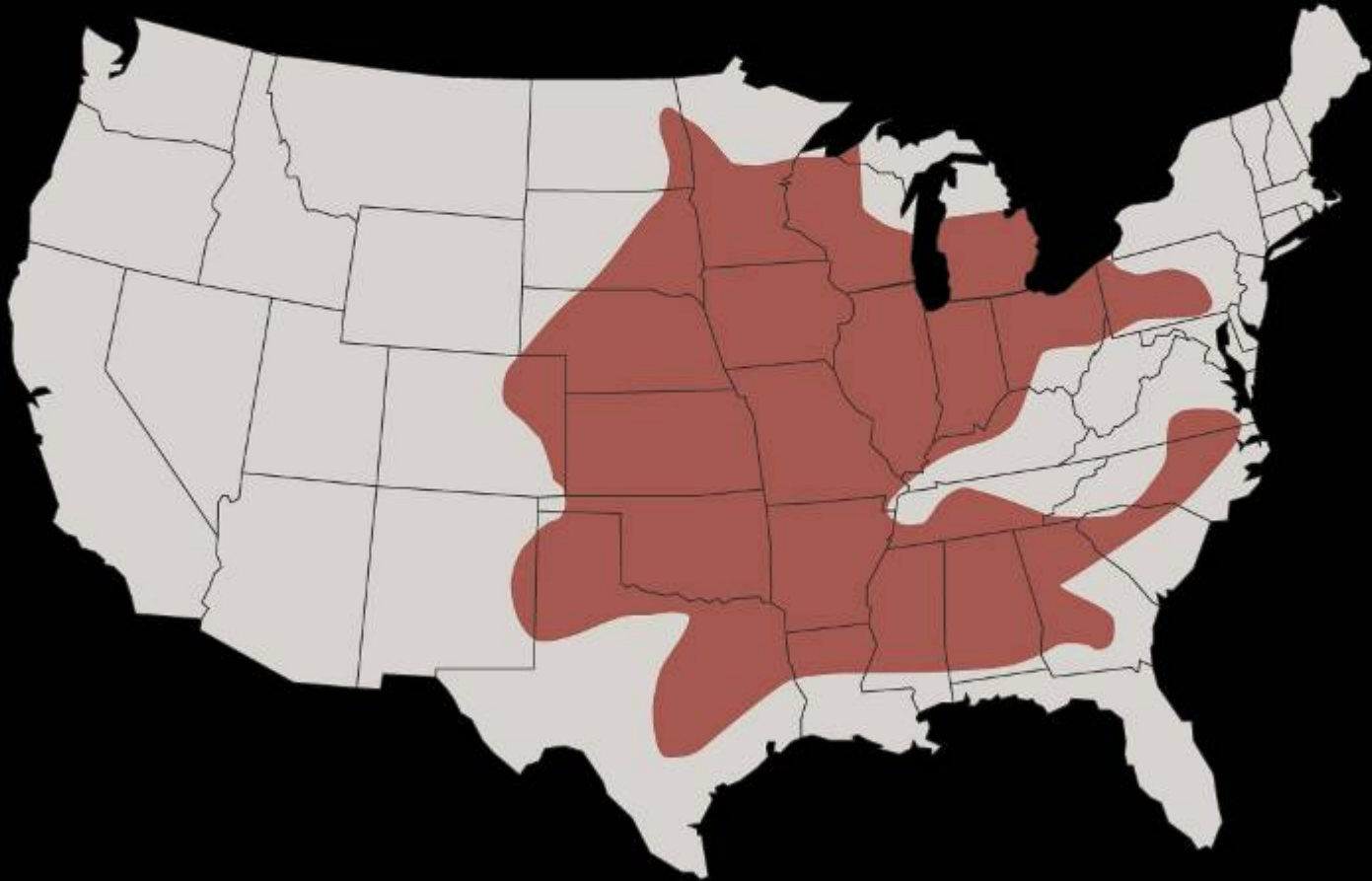
**Mother Nature is to blame  
for most power outages.**

# *Leading causes of power outages*

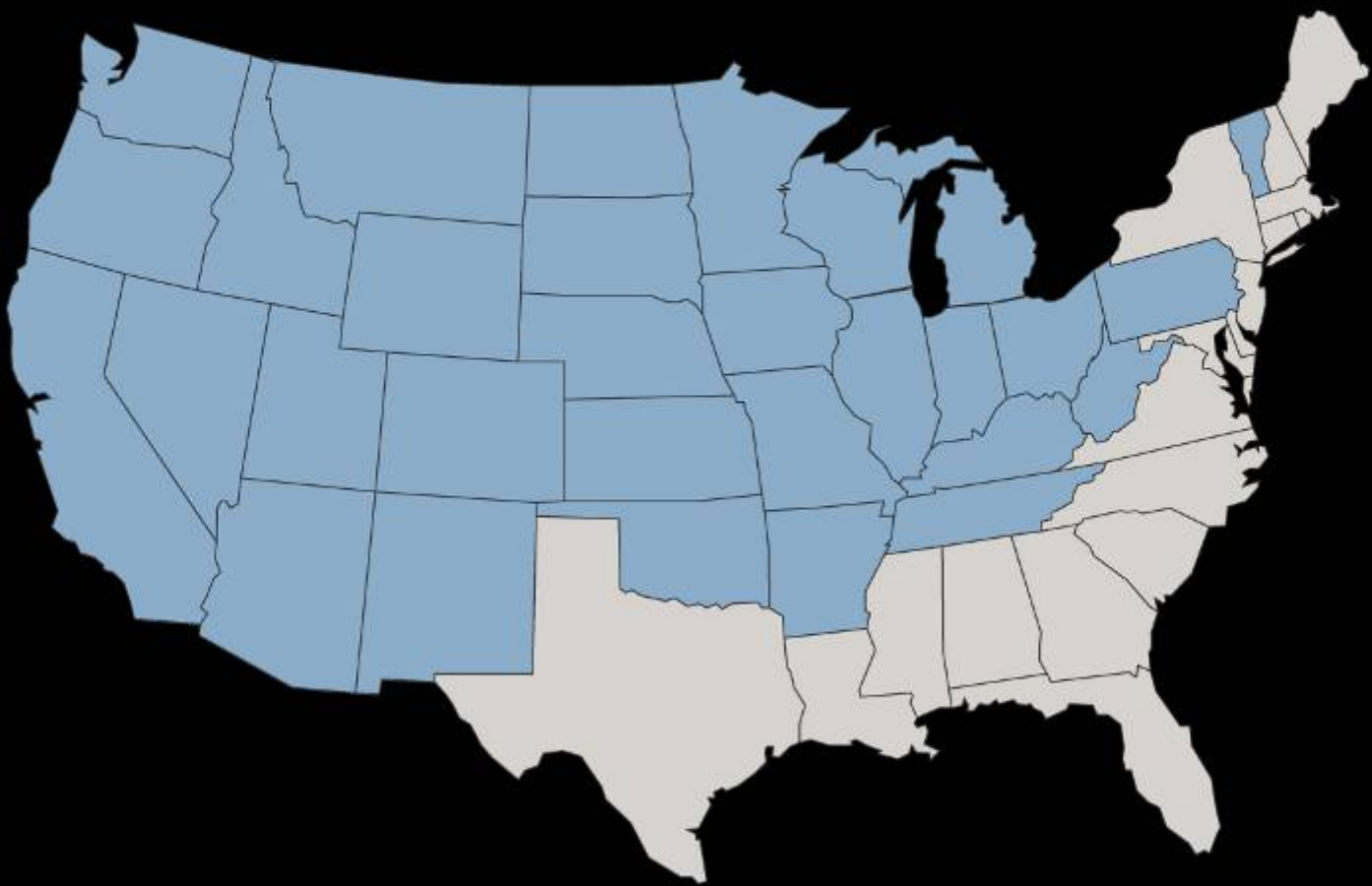
**■ Earthquakes**



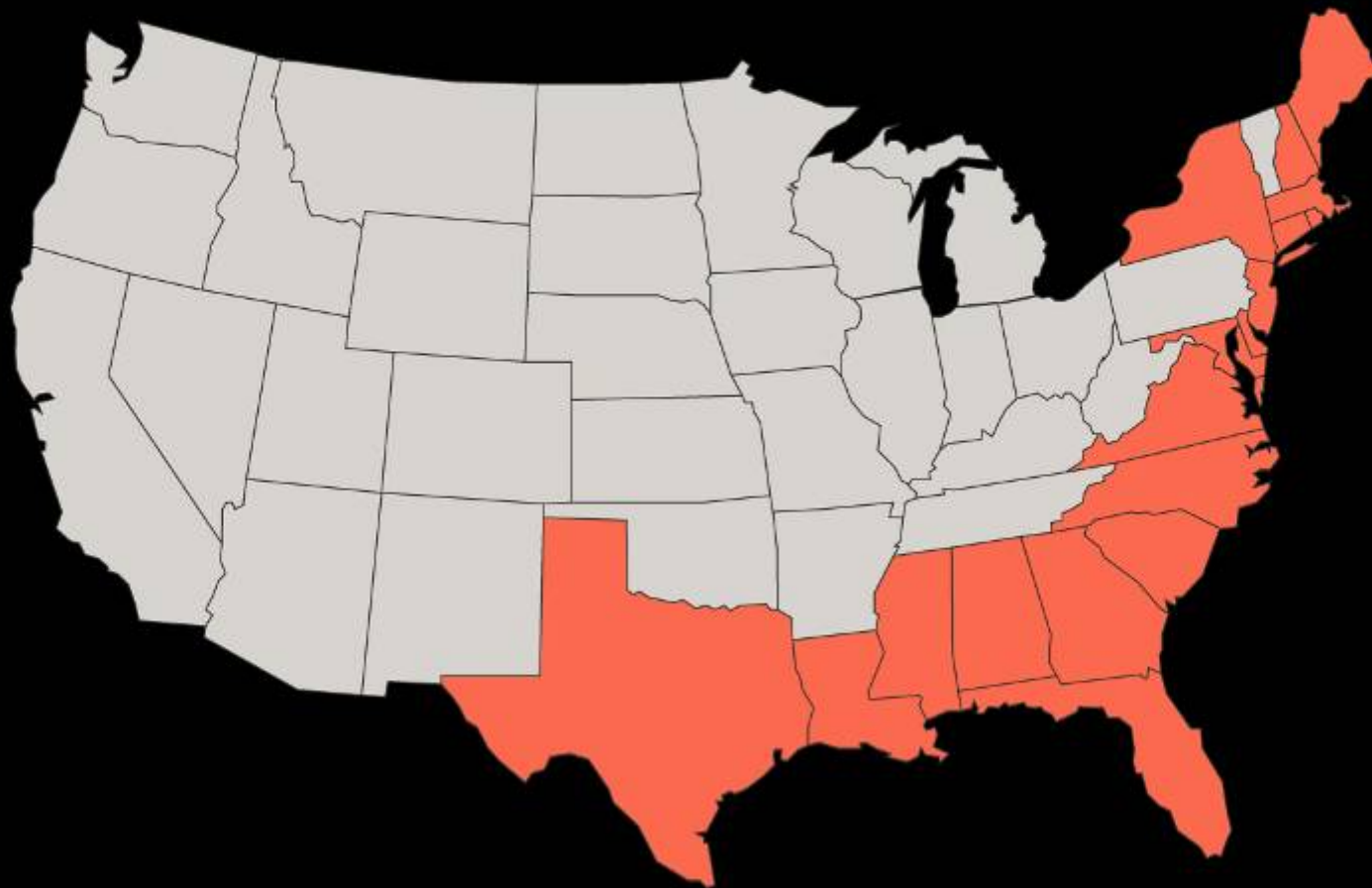
 **Tornadoes**



**■ Snow/Ice Storms**

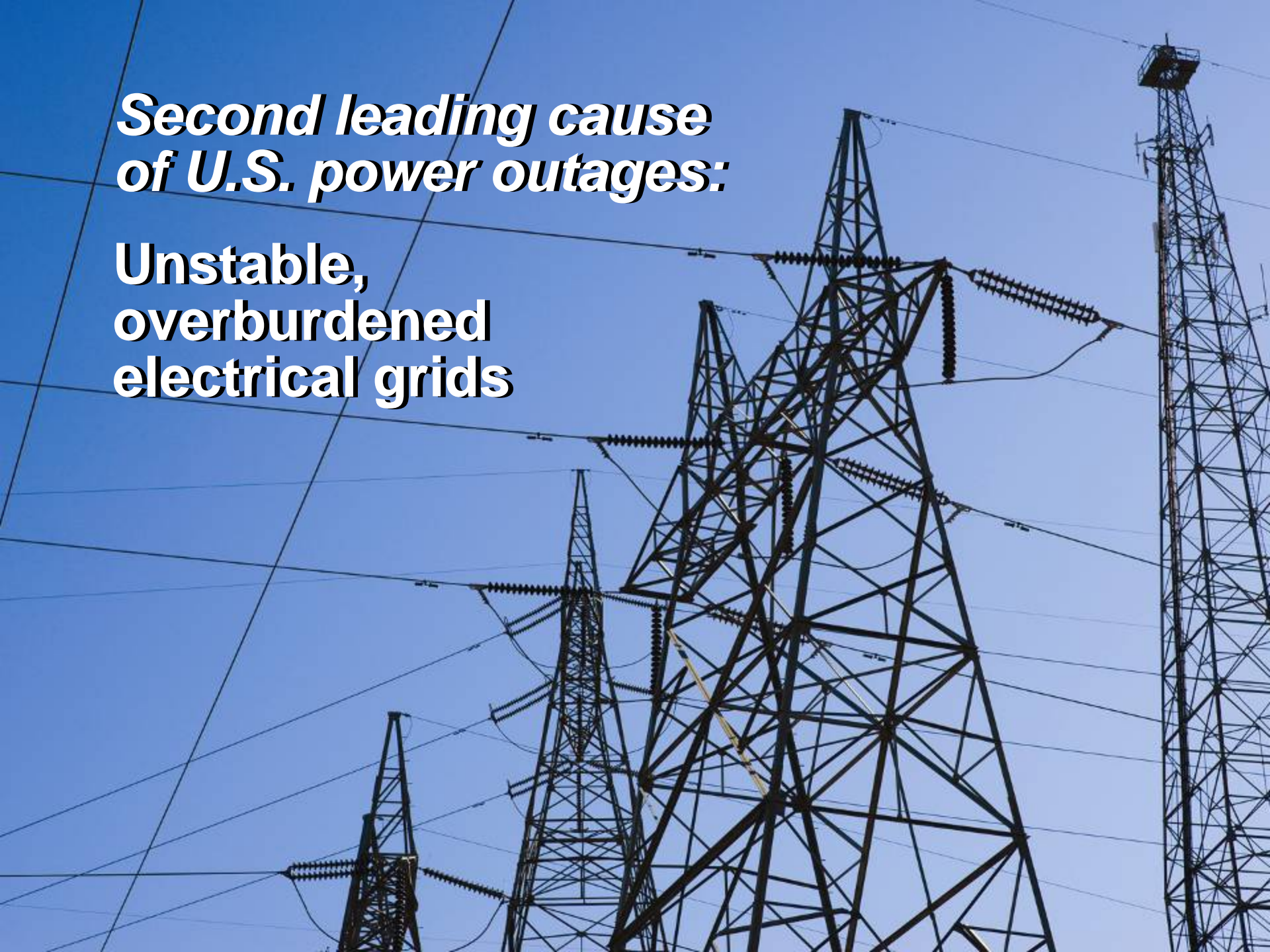


 **Hurricanes**



***Second leading cause  
of U.S. power outages:***

**Unstable,  
overburdened  
electrical grids**



**When your power goes out...**



**...a Lennox Residential Generator comes to the rescue.**





- Permanent installation
- Natural gas or LP gas



**When an outage occurs...**



- Generator responds automatically
- Restores power within 10 seconds
- 3 times faster than competitive models




Available in 3 sizes:

- 12kW
- 18kW
- 30kW



**Your Lennox dealer  
will help you choose  
the right size generator.**

A photograph showing two men in a utility room. The man on the left is wearing a dark blue plaid shirt and jeans, looking towards the right. The man on the right is wearing a maroon long-sleeved shirt, dark pants, and a black hard hat, pointing at an open electrical panel. The panel is grey and has a white label on the inside of the door. To the right of the panel, there is a grey electrical meter mounted on the wall. The background is a plain, light-colored wall.

**Size depends on how many circuits you want supplied with backup power.**



12kW:

Basic electrical needs

- Refrigerator
- Dishwasher
- Air Conditioner
- Furnace
- Lighting
- Television
- Garage Door Opener
- Computer



## 18kW and 30kW: Additional electrical demands

- Electric Range
- Clothes Dryer
- Multiple Air Conditioners
- Sump Pump
- Security System
- Wine Cellar

# **Lennox Residential Generator: How it Works**

# Automatic Transfer Switch: The Heart of the System



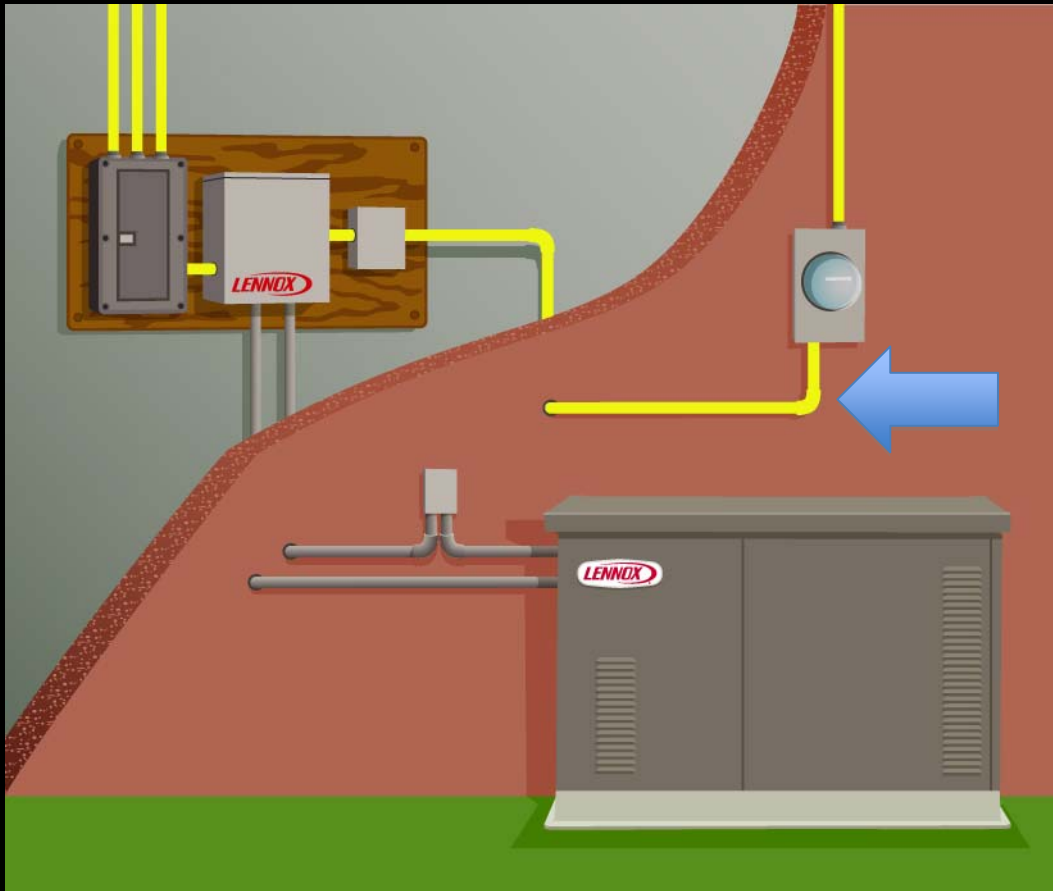
Essential Load Switch



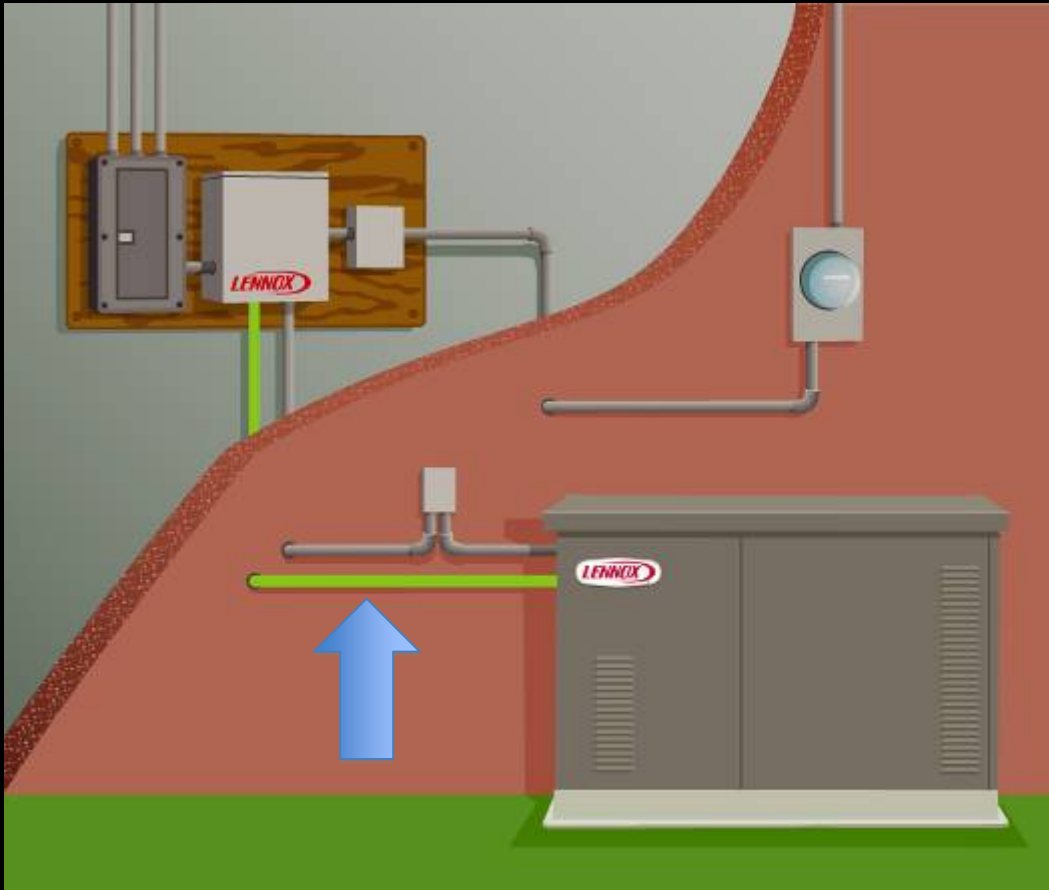
Whole-House Switch



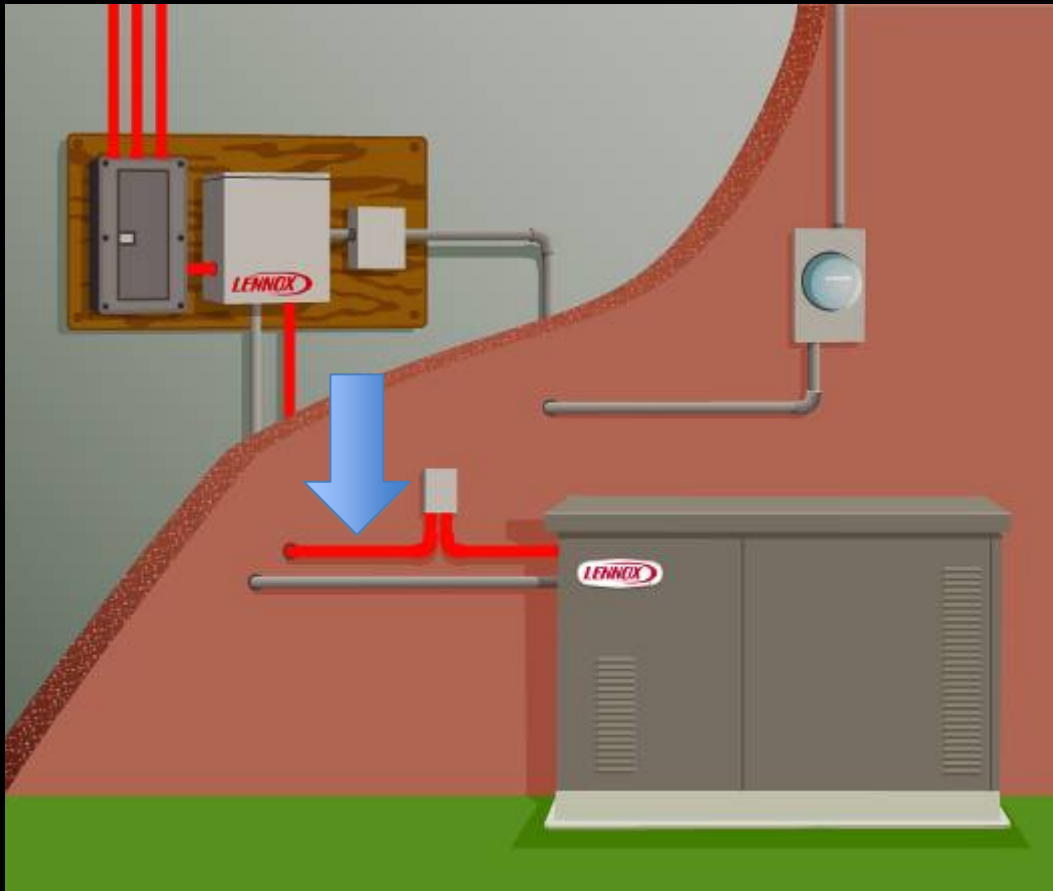
All-in-One  
Whole-House Switch



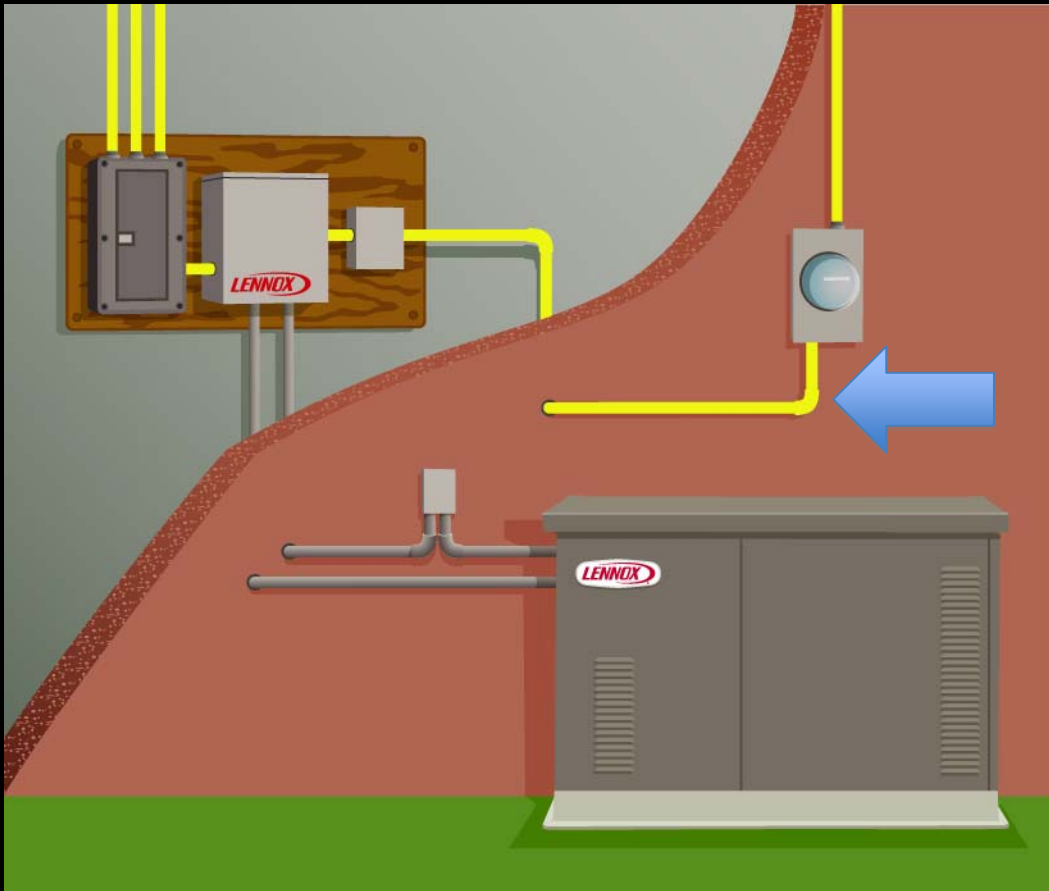
- Automatic Transfer Switch monitors incoming voltage 24/7



- Transfer Switch senses outage
- Generator automatically starts



- Generator begins supplying electricity to pre-selected circuits within seconds



- Transfer Switch senses restoration of line voltage and shifts load back to utility service
- Generator runs cool-down cycle, shuts down and returns to standby mode

# Always Ready!



- Weekly 20-minute test cycles run automatically
- Test cycles keep unit tuned up and operating at peak effectiveness



THIS SEAL APPLIES TO LENNOX  
EQUIPMENT ONLY.  
GOOD HOUSEKEEPING IS NOT  
RESPONSIBLE FOR INSTALLATION.

**Backed by the Good Housekeeping Seal  
Lennox: A name you can trust!**

**When the power goes out,  
don't be left in the dark.**



- Protect your home and family
- Enjoy true peace of mind



**1-800-9-LENNOX**  
**[www.lennox.com](http://www.lennox.com)**

